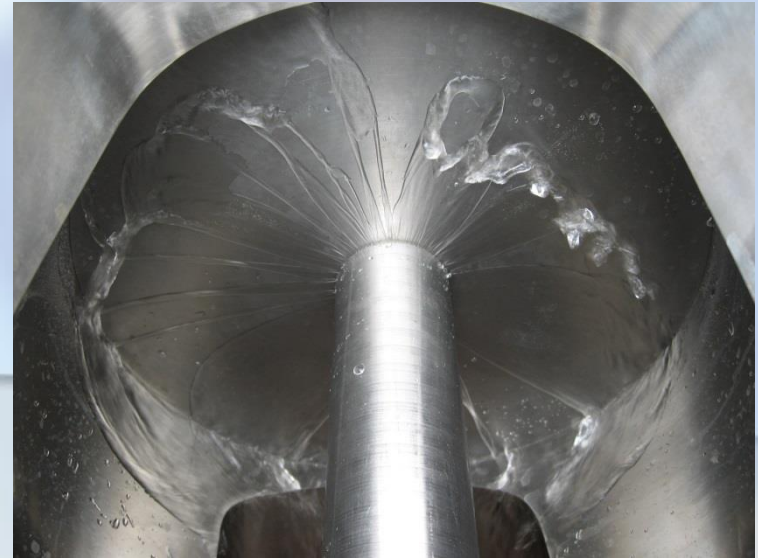


- Rotary valve for CIP has been recently designed and manufactured.
- Valve has been tested and approved by the EHEDG.
- The main advantage of the DMN design is that the **shaft seal arrangement** is also flushed and dried during the same CIP cycle as is being used for the rest of the equipment, therefore ensuring that all eventual micro-biological contamination has been neutralized. This eliminates the need for operator intervention during cleaning cycles and therefore reduces considerably the chance of malfunction.



Diverter for CIP to Follow

DMN-WESTINGHOUSE

